

# Australia's longest 4 Post Truck Hoist CL18TL-XL Extra Long 18 Tonne



# Classic CL18TL-XL Extra Long Truck Hoist Special Features

---

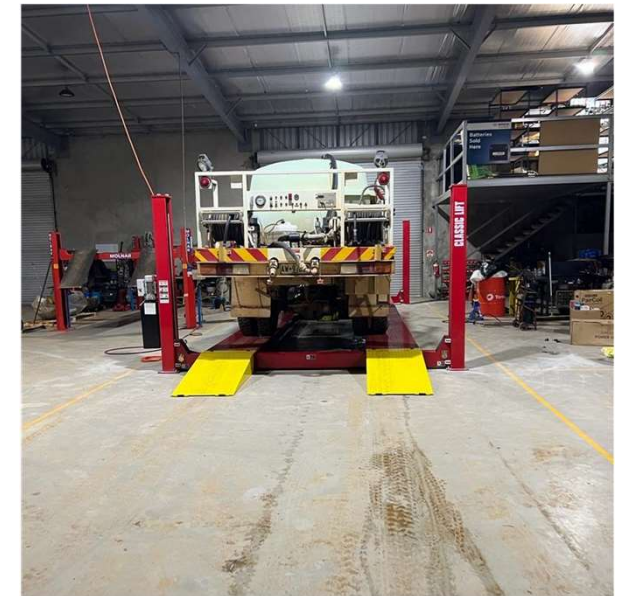
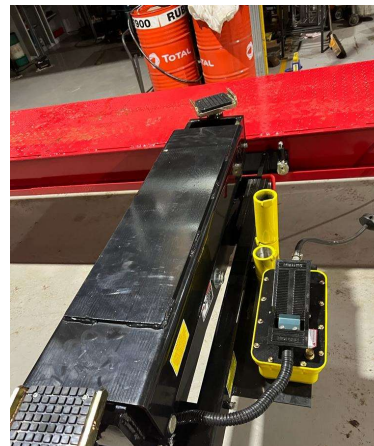
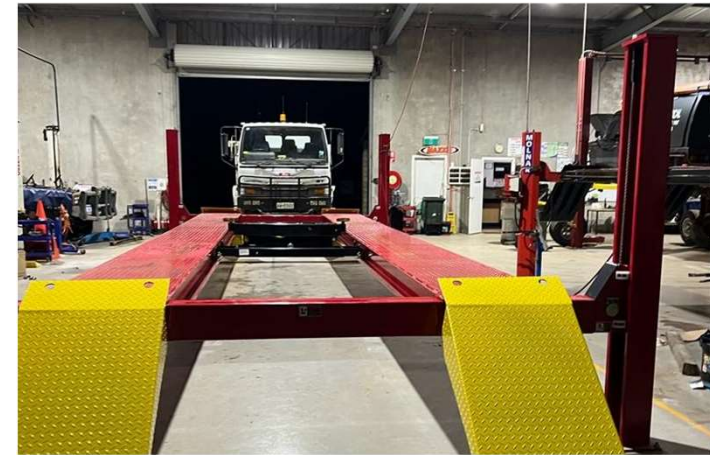
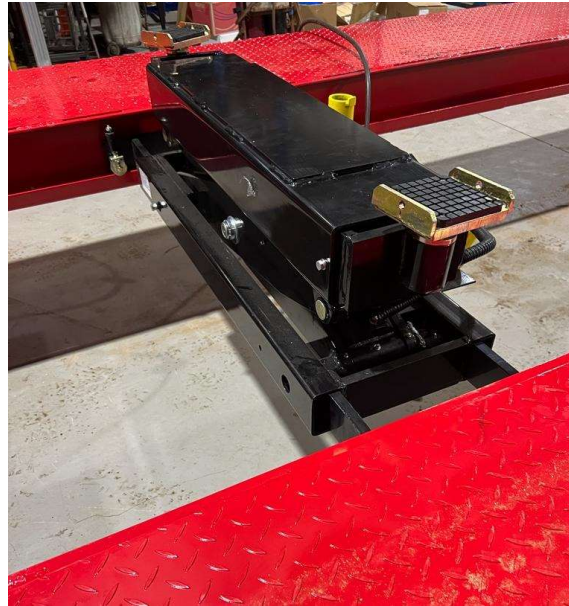
- Air-released safety lock for convenient operation and reliability
- Mechanical self-lock and cable-breaking protection
- Aircraft quality cable
- Skid proof diamond platform
- Hydraulic cylinders are designed and made to high quality standards
- Strict quality control of cylinders with flow restrictor for a stable and smooth operational speed



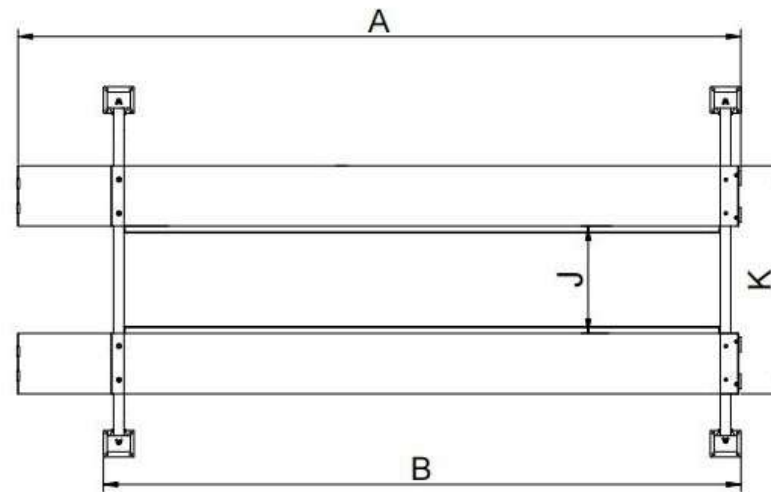
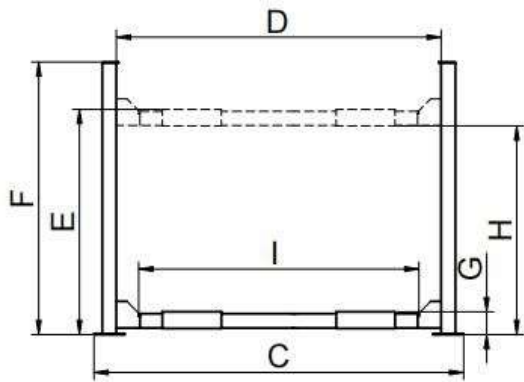
# Classic CL18TL- XL Truck Hoist Optional Extras

---

- Optional LED Light Kits
- Optional Jacking Beam:  
CLRJ-10TA – 10,000KGS
- Optional Airline Kit For The  
Jacking Beam



# Classic CL18TL-XL Extra Long Truck Hoist Specifications



<b>Model</b>	<b>CL18TL-XL</b>
<b>Lifting Capacity</b>	<b>18000kg (40,000 lbs)</b>
<b>Lifting Time</b>	<b>160 Seconds</b>
<b>Overall Length (Inc Ramps)</b>	<b>A 10800mm</b>
<b>Overall Length (No Ramps)</b>	<b>B 9514mm</b>
<b>Overall Width</b>	<b>C 4100mm</b>
<b>Width Between Columns</b>	<b>D 3654mm</b>
<b>Max.Lifting Height</b>	<b>E 1900mm</b>
<b>Overall Height</b>	<b>F 2332mm</b>
<b>Minimum Height</b>	<b>G 265mm</b>
<b>Max.Underneath Height</b>	<b>H 1674mm</b>
<b>Drive-Thru Clearance</b>	<b>I 3298mm</b>
<b>Width Between Runways</b>	<b>J 1496mm</b>
<b>Outside Edge of Runways</b>	<b>K 2916mm</b>
<b>Gross Weight</b>	<b>4234Kg</b>
<b>Motor</b>	<b>4.0 HP</b>